

# TTR200 SMART RTD SLIDE WIRE TRANSMITTER USER MANUAL



## IMPORTANT - CE & SAFETY REQUIREMENTS

This product must be mounted inside a suitable enclosure providing environmental protection = > IP54.

To maintain CE compliance all input wires must be less than 3 meters.

The product contains no user serviceable parts, or internal adjustments. No attempt should be made to repair this device. Faulty units must be returned to supplier or manufacturer for repair or replacement.

This product must be installed by competent qualified personnel.

All electrical wiring must be installed to comply with the area standards, regulations.

Before attempting electrical connection ensure all supplies are switched off.

ABSOLUTE MAXIMUM OPERATING CONDITIONS :-

Supply	30VDC (reverse protected to -30VDC)
Supply Current on over voltage	+ 100mA (when supply exceeds 30VDC, protection device will conduct)
Input voltage	± 3VDC
Ambient	-40 to 85° C



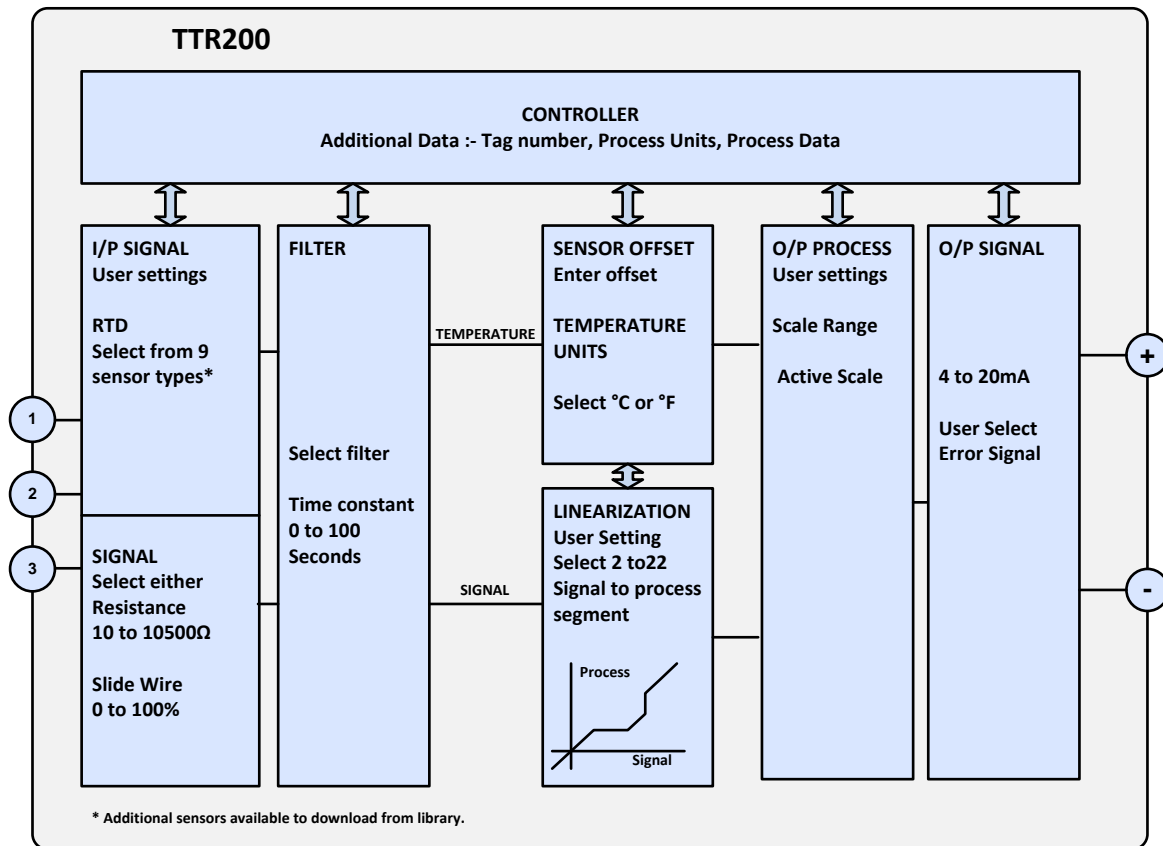
PLEASE REFER TO THE PRODUCT LABEL FOR MANUFACTURERS CONTACT DETAILS.

Every effort has been taken to ensure the accuracy of this document, however we do not accept responsibility for damage, injury, loss or expense resulting from errors and omissions, and we reserve the right of amendment without notice.

## RECEIVE AND UNPACKING

Please inspect the packaging and instrument thoroughly for any signs of transit damage. If the instrument has been damaged, please notify your supplier immediately.

OPERATION (please refer to data sheet for full technical specification.)



## CONFIGURATION

USB Configuration Kit required.

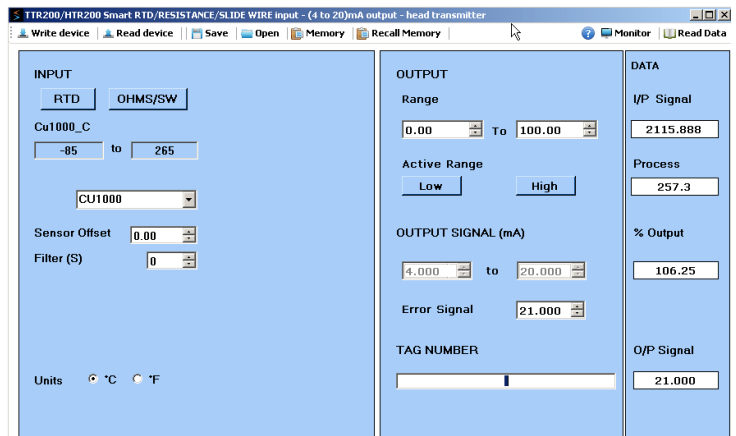
This product is configured using the USB port of a PC running USB\_Speed\_Link software, available from www.statinst.com. During configuration the product is powered direct from the USB port, removing the need for additional power. USB\_Speed\_Link software is provided with detailed help menu to guide the user through the simple configuration procedure. Unless specified at the time of order this product is supplied with the default configuration listed below.

Connect red wire to + terminal, black wire to - terminal of the 4 to 20mA loop.



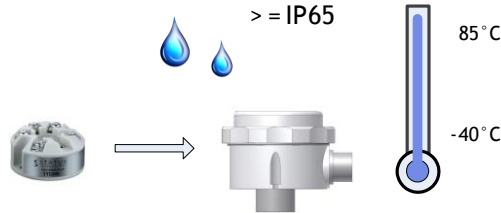
Factory default:

Input range	= PT100 IEC
Process Range	= 0 to 100
Units	= °C
Output range	= 4 to 20mA
Filter	= off
User offset	= 0.0°C
Tag	= " "

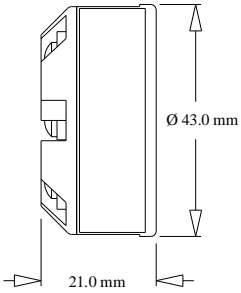


**MECHANICAL INSTALLATION**

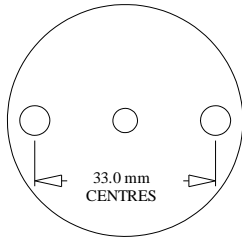
**MOUNTING**



**SIDE VIEW**



**BASE VIEW**



The TTR200 is mounted using two 5.5mm holes, on standard 33mm fixing centers and will fit a DIN standard termination head. The TTR200 must be installed with adequate protection from moisture and corrosive atmospheres. Enclosure color gray. Labels - Two product identification labels indicate Serial number, Model, Input Type Range. Connection label indicates output +/- terminals and 1 to 3 Input terminals.

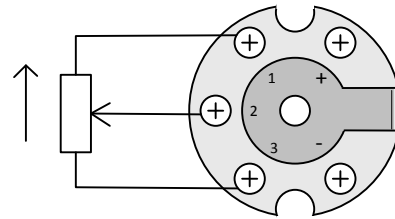
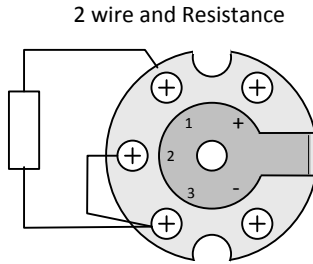
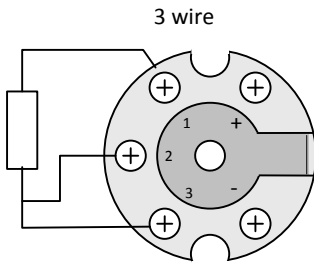
**ELECTRICAL INSTALLATION**

Wire sensor.

Sensor connections are as follows, to maintain BS EN61326 compliance sensor wires must be less than 3 meters. All sensor connections must be isolated from ground.

Sensor RTD or Resistance 10 to 10500 ohm

Slide Wire 1 to 100Kohm



Install assembly

Care must be taken to ensure the TTR200 is located where the ambient temperature does not exceed the specified operating temperature of -40 to 85°C

Wire 4 to 20mA Loop

Ensure all other aspects of the installation comply with the requirements of this document. The 4 to 20mA loop is connected as follows:-

