

SINGLE AND DUAL CHANNEL RELATIVE HUMIDITY TRANSMITTERS

SEM161 and SEM162

- SIMPLE CONFIGURATION VIA USB PORT POWERED CONFIGURATOR
- INTERCHANGEABLE DIGITAL SENSOR
- RH, TEMPERATURE, DEW POINT or (Tamb–Tdew point) SELECTABLE OUTPUTS
- HIGH ACCURACY AND STABILITY
- ISOLATED OUTPUTS
- DISPLAY OPTION
- 10 YEAR WARRANTY



INTRODUCTION

The SEM161 & SEM 162 are cost effective “smart” relative humidity transmitters with a single two wire 4 to 20 mA output (SEM161) or a dual two wire 4 to 20 mA output (SEM162). The design uses a smart interchangeable digital sensor for relative humidity that can be replaced without effecting system accuracy and a precision Pt100 sensor for temperature measurement. A four digit display is optional.

The product will measure humidity, temperature, dew point and delta T (the difference between dew point and ambient temperature) values. PC configuration using our free software, available on our website, allows you to output any of these 4 parameters on the SEM161, or any two on the SEM162. You can even program the SEM162 to output the same parameter on both loops.

Configuration is performed quickly using our new USB port driven configurator by connecting the transmitter to the configurator and following the software instructions. The software allows you to tag the device, set installation date and set output range plus has an “Alignment” feature that allows the user to precisely calibrate the unit at a specific RH reading. Either fixed ranges or your own custom ranges can be configured for all output types in °F or °C.

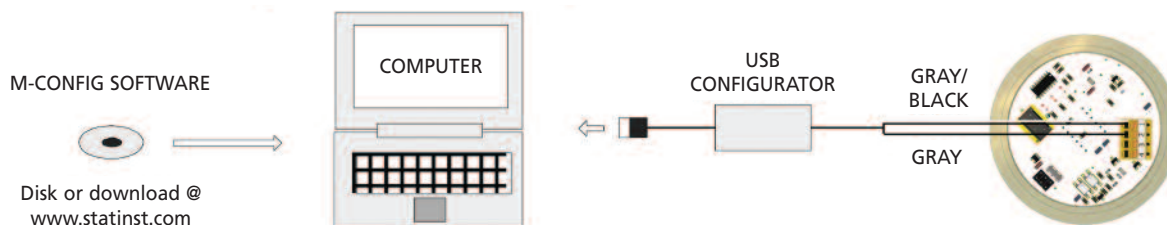
The 4 digit LED display option provides you with a visual indication of the process parameters. The display may be set to indicate either humidity, temperature, dew point or toggle between all three parameters.

Using our popular SCH4 NEMA 4 connection head, the SEM161/162 series can be ordered for duct, wall or remote sensor mounting.

If required the desired range can be specified at the time of order, removing the need for user configuration however, range can be changed by user if required.

PC CONFIGURATION

Running Windows XP or later with USB port



SPECIFICATIONS @ 68°F

GENERAL

Update Time	3 Seconds
Start Up Time	10 Seconds (Output < 4 mA during Start up)
Power Supply	10 to 30 VDC 15 to 30 VDC with Display

MECHANICAL

Conduit Connection	½" NPTF
Solid Wire (AWG)	20-28
Stranded Wire (AWG)	20-28
Wire Strip Length	¼"

INPUTS

Sensor Type	Humidity/Temperature
Humidity Range	0 to 100% RH
Temperature Range	-22°F to 212°F

PROCESS ACCURACY

Humidity	±2%
Temperature	±0.7°F

OUTPUTS

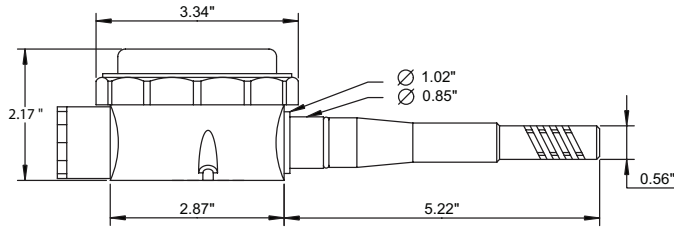
Humidity Range	0 to 100% RH
Temperature Range	-22°F to 212°F
Dew Point Range	-22°F to 212°F
(Tamb – Tdew point)	32°F to 122°F
Output Type	2 wire 4 to 20 mA current loop
Output Range	4.0 to 20.0 mA
Output Connection	Two connection screw terminal
Maximum Output	20.5 mA in high burnout condition
Minimum Output	3.9 mA in low burnout condition
Accuracy	(mA output / 2000) or 5 µA whichever is the greater

Loop Voltage Effect	0.2 µA / V
Thermal Drift	1 µA / °C
Maximum Output Load	[(Vsupply – 10)/20] K Ohms (Example: 700 Ohms @ 24V)
Channel Isolation	500 VDC

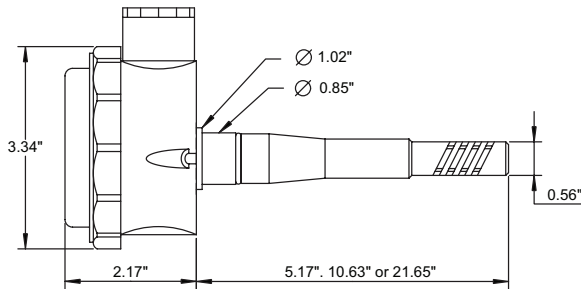
DISPLAY OPTION

Type	4 digit (9 mm) Red LED
Variables Displayed	RH, Dew Point and Temperature
Resolution	0.1% - 0.1 °C / °F
Update Rate	800 ms

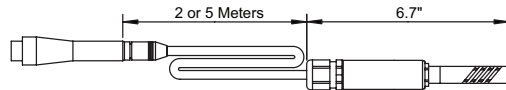
WALL MOUNT



DUCT MOUNT



REMOTE SENSOR



ENVIRONMENTAL

PROBE

Ambient Operating Range	-22°F to +212°F
Ambient Humidity Range	0 to 100% RH

TRANSMITTER

Ambient Operating Range	-22°F to +185°F
Ambient Storage Temperature	-58°F to +194°F
Ambient Humidity Range	0 to 90% RH non condensing

APPROVALS

EMC – BS EN 61326 : 1998

Electrical equipment for measurement control and laboratory use.

ANNEX A

Immunity test requirements for equipment intended for use in industrial locations.

ANNEX F

Test configurations, operational conditions and performance criteria for transducers with integrated or remote signal conditioning.

IEC 61000-4-2	Electrostatic discharge
IEC 61000-4-3	EM Field
IEC 61000-4-4	Transient Burst (output)
IEC 61000-4-5	Surge (output)

ORDER CODES:

SEM16	Output	/	Mounting	/	Probe	/	Display
	1 Output – Humidity 1		Wall W		Probe 161 162 Length		Display Option
	2 Outputs – Humidity & Temperature .. 2		Duct D		Wall H HP 100mm		No Display ... Blank
			Remote... R		Duct H01 HP01 120mm		Display DP
					Duct H02 HP02 250mm		
					Duct H03 HP03 530mm		
					Remote H01 HP01 2M		
					Remote H02 HP02 5M		

Local Representation



PO Box 548, 456 Park Ave., Scotch Plains, NJ 07076
 Phone: (800) 700-3272 Fax: (800) 700-5468 (US & CA only)
 Email: sales@statinst.com Web: www.statinst.com